

*designer*  
ALLBOARDS

PLUS



COPYBOARD  
**M-18**  
SERIES

## SIMPLE OPERATION

### Record your ideas without pausing your train of thought.

Meetings are a meeting of minds - a place where everybody puts their heads together and great ideas are born. You don't want a complicated machine that will stop the flow of ideas. You want an easy-to-use tool that will work as quickly as your mind does. Enter the new series of Copyboards from PLUS. PLUS is the company that first brought you the Copyboard, and PLUS has been working constantly since then, developing ever better products for you. Here are the latest and greatest in creative meeting tools.





## Slim and light

Don't bring your meeting to the Copyboard, bring your Copyboard to the meeting. This new Copyboard is easy to move to the location of your choice.



## Sliding sheet

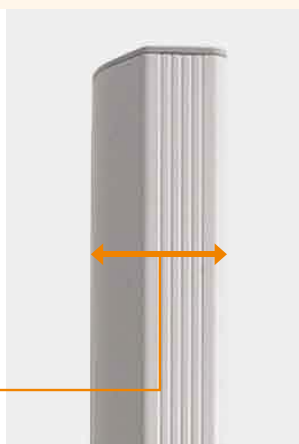
When you run out of space, just slide the sheet with your hand and make more room. Carry on your writing without interrupting the flow of ideas.



## 40% thinner than previous boards

The PLUS Copyboard's slim design (only 72mm/2.8" thick) makes it easier to move around compared to other bulky boards.

72mm/2.8"



## Light enough for anybody to move

The board is also 22% lighter than previous boards, making it easy to move.

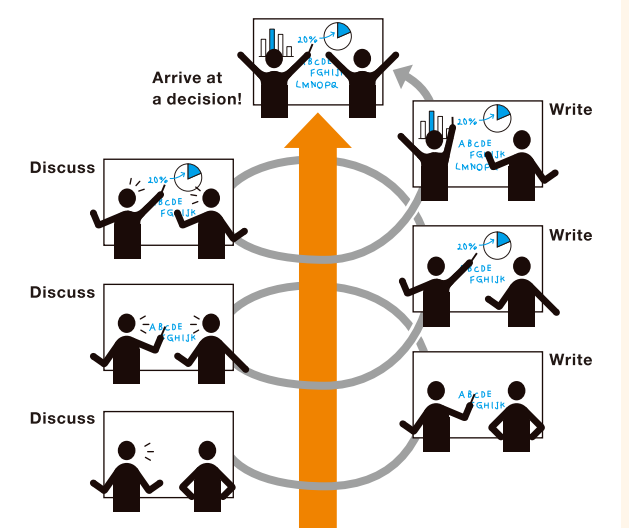


## Easier to scroll... and you can scroll in either direction

You can scroll the sheet forward or backward with the touch of a hand. No more pausing your train of thought when you run out of space or need to see what you've written on the other side of the sheet.

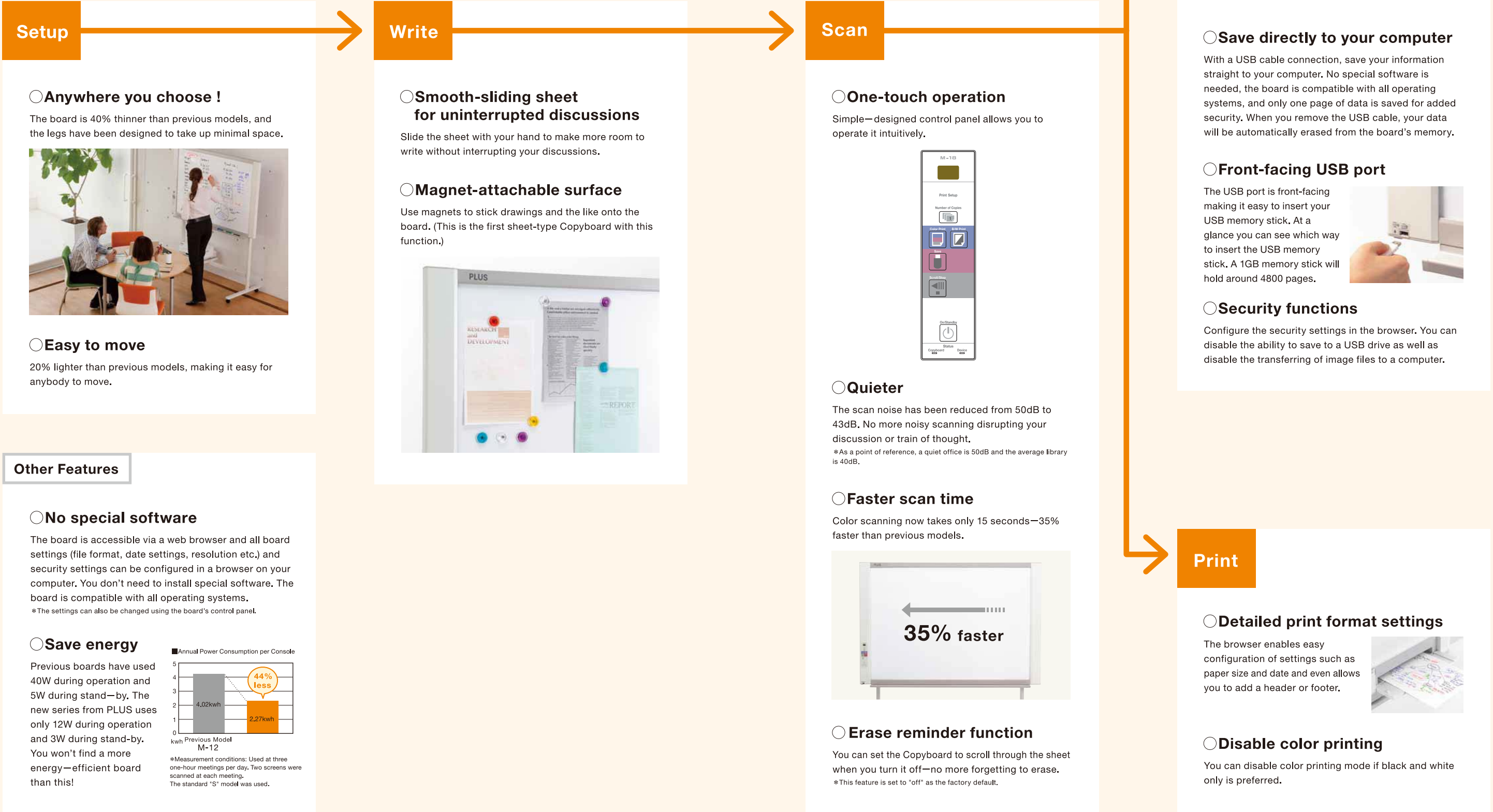
## Discussion + writing = synergy

Writing is an invaluable element of dynamic discussions. Visual brainstorming allows you to organize your ideas, make connections and reinforces memories. The best discussions happen when everyone is giving their full attention, and with this new Copyboard everyone can do just that. And now you can be confident in the knowledge that everything you write is being saved for easy reference later.



# Make every stage of your meeting stress-free

From pre-meeting preparations to post-meeting follow-ups, PLUS Copyboards make it easy. The boards have a wealth of functions that improve the speed and quality of your meetings at every step along the way.





COPYBOARD  
**M-18**  
SERIES

**Standard Model**

The stanard model of the new PLUS Copyboard has two writting panels, and possesses a clean design that compliments any office space.



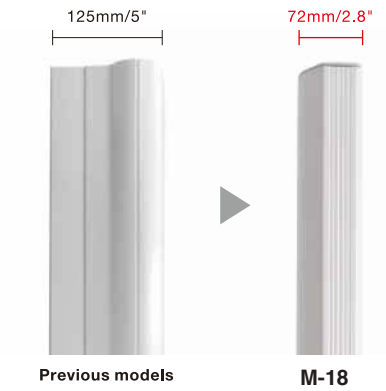
**Easy to move**

This new Copyboard is the lightest model in the industry, making it easy for anybody to move it to a meeting location.



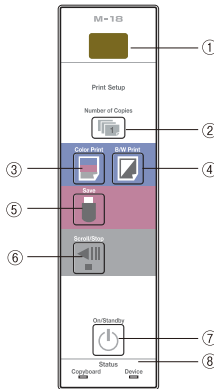
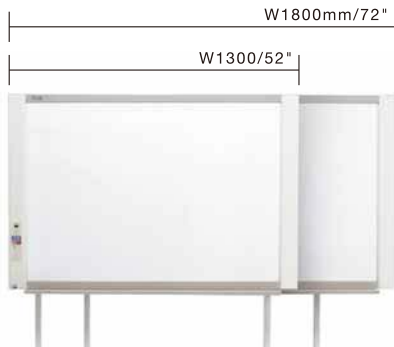
**40% thinner**

This new Copyboard is only 72mm /2.8" – 42% thinner than previous models (125mm/5").



**Two board sizes**

Choose the Wide model if you want extra room or the Standard model if you'd like something more compact. With two sizes, there's something to suit everybody's office or meeting style.



**A simpler control panel**

The simple-designed control panel allows you to operate the board intuitively.

- |                           |                                   |
|---------------------------|-----------------------------------|
| ① Display Window          | ⑤ Save to USB memory stick button |
| ② Number of Copies        | ⑥ Scroll/Stop button              |
| ③ Color Print button      | ⑦ Power button                    |
| ④ Monochrome Print button | ⑧ Status /Error notification      |

**Configure settings in the browser**

Copyboards used to require special software. Not anymore! With this Copyboard you can configure your settings in the browser, no matter what operating system you have.

- [Setup Items]**
- ☐ Saving file format
  - ☐ Security configuration  
(Disable to save to USB memory stick or computer)
  - ☐ Date setting
  - ☐ Resolution, Aspect ratio, etc

**M-18 Series**

**M-18**



**M-18 with optional stand**



**[ Main Features ]**

- |  |   |
|--|---|
| <input type="radio"/> Width of the board :<br>1800mm/72", 1300mm/52"             | <input type="radio"/> Security<br>Disable to save to USB memory stick<br>Disable to save to computer<br>Erase Reminder function |
| <input type="radio"/> Number of Panels : 2 panels                                | <input type="radio"/> Color Mode Restriction  |
| <input checked="" type="radio"/> Hand-scrollable sheet                           | <input checked="" type="radio"/> Low Power Consumption  |
| <input type="radio"/> Color/Monochrome print                                     | <input checked="" type="radio"/> Quiet operation  |
| <input type="radio"/> Save to USB memory stick                                   | <input checked="" type="radio"/> Magnet attachable panel  |
| <input checked="" type="radio"/> Save to a computer<br>(No software is required) | <input type="radio"/> Stand height adjustment   |

**The sheet maintenance**  
In order to keep quality of the sheet, please wipe the sheet with a water-damp cloth regularly.

Lineup

BOARD TYPE (Model name)			Standard (M-18S)		Wide (M-18W)	
Form	Installation method		Self-standing (T-shaped legs), or wall mounting			
	External dimensions (T-shaped legs*1)		W1480 × D675 × H1947*2 mm		W1980 × D675 × H1947*2 mm	
	Main unit weight		20 kg*3		25 kg*3	
	T-shaped legs weight		12.5 kg			
BOARD	Panel Size		H910 × W1300 mm		H910 × W1800 mm	
	Effective reading size		H900 × W1280 mm		H900 × W1780 mm	
	Number of Pages		2			
	Paging		Endless in one direction (Horizontal scrolling)			
	Drive method		Sheet movement			
	Reading method		CIS (Contact Image Sensor)			
	Reading illumination light source		RGB LED			
	Reading resolution		Main scanning direction (vertical sheet surface) 1.92 dots/mm (50 dpi or equivalent) Sub scanning direction (horizontal sheet surface) 1.92 dots/mm (50 dpi or equivalent)			
	Reading time		Black & white: approx. 15 s Color: approx. 15 s		Black & white: approx. 21 s Color: approx. 21 s	
Interface	Board	File format	JPEG format (or PDF format*4)			
		Screen size	Standard type: 2458 x 1728 dots (fixed) Wide type: 3418 x 1728 dots (fixed)			
	External memory	Type	USB Flash memory			
		Compatible FAT types	FAT 16, 32			
		Interface	USB1.1 or USB2.0 *5			
	Printing	Printing resolution	300 dpi or equivalent			
		No. print colors	16 or grayscale			
		Printer interface	Conforming to USB 2.0 standards			
		Added functions		Clock Used for the timestamp and for file dating properties (Includes backup battery for when there is a loss of power. Battery life: Approx. 00 hours)		
PC connection		Images can be acquired and device settings made via USB (using a browser)				
Power supply	AC power adapter		Input : AC100–240V/50–60 Hz, Max 0.75 A Output : DC 12 V, 3.0 A			
	Power consumption		In standby: 3W, During operation: 12W (not including printer)			
Operating conditions	Temperature:		10–35°C			
	Humidity:		30–85% (No condensation)			
Miscellaneous	Ruled lines		50 mm cross-ruled squares			
	Miscellaneous		Dedicated markers (black, red, blue, and green)			
Operating environment	OS		Fully IBM PC/AT compatible computer equipped with standard USB port. XP (Home Edition /Professional Edition, Service Pack 3 or greater)/ Vista (32-bit version) / Windows 7(32-bit/64-bit) Or, Apple Macintosh computer with standard USB port Mac OS X 10.5 or greater			
	Web browser		Windows : Internet Explorer 8.0 or greater Macintosh : Safari 5 or greater * Enable JavaScript. * With Adobe Flash Player 10 installed			

Remarks

\*1: The height is adjustable at 1747, 1847 and 1947 mm.

\*2: The value indicated for “H” (height) is the maximum height.

\*3: Not including the weight of the printer.

\*4: North America Only.

\*5: USB memory device not included. The memory capacity corresponds to 32GB or less.

• Please note that for quality improvement purposes, specifications and design are subject to change without prior notice.





PHONE 1300 769 472  
EMAIL [sales@designerallboards.com.au](mailto:sales@designerallboards.com.au)  
WEBSITE [www.designerallboards.com.au](http://www.designerallboards.com.au)